

Rab30

Catalog Number: 21062

Gene Symbol: RAB30

Description: Anti-Rab30 Rabbit Polyclonal Antibody

Background: Rab30 is a member of the Ras-super-family small GTPases. Rab30 is involved in intracellular trafficking and is localized in trans-Golgi.

Immunogen: A synthetic peptide from the C-terminal of human Rab30 protein

Tested Applications: ELISA, WB, IHC, IP

Recommended Dilutions:

ELISA	1:100-1:5000
WB	1:100-1:1000
IHC	1:100-1:1000

Concentration: 0.2 mg/ml

Host: Rabbit

Clonality: Polyclonal

Purity: Purified from serum

Format: Liquid

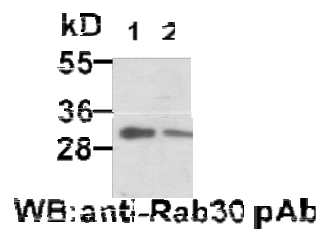
Preservative: No

Constituents: PBS (without Mg^{2+} and Ca^{2+}), pH7.4, 150 mM NaCl, 50% glycerol

Species Reactivity: Rab30 antibody recognizes Rab30 proteins from vertebrates.

Storage Conditions: Store at $-20^{\circ}C$. Avoid freeze / thaw cycles

Western blot:



EC-1 (lane 1) and HepG2 (lane 2) whole-cell lysates were used for Western blots with anti-Rab30 polyclonal antibody (cat # 21062).

FOR RESEARCH USE ONLY. NOT FOR DIAGNOSTIC APPLICATIONS

NewEast Biosciences
1150 First Avenue, Suite 501
King of Prussia, PA 19406

Support: [610-945-2007](tel:610-945-2007)
info@neweastbio.com
Web: www.neweastbio.com